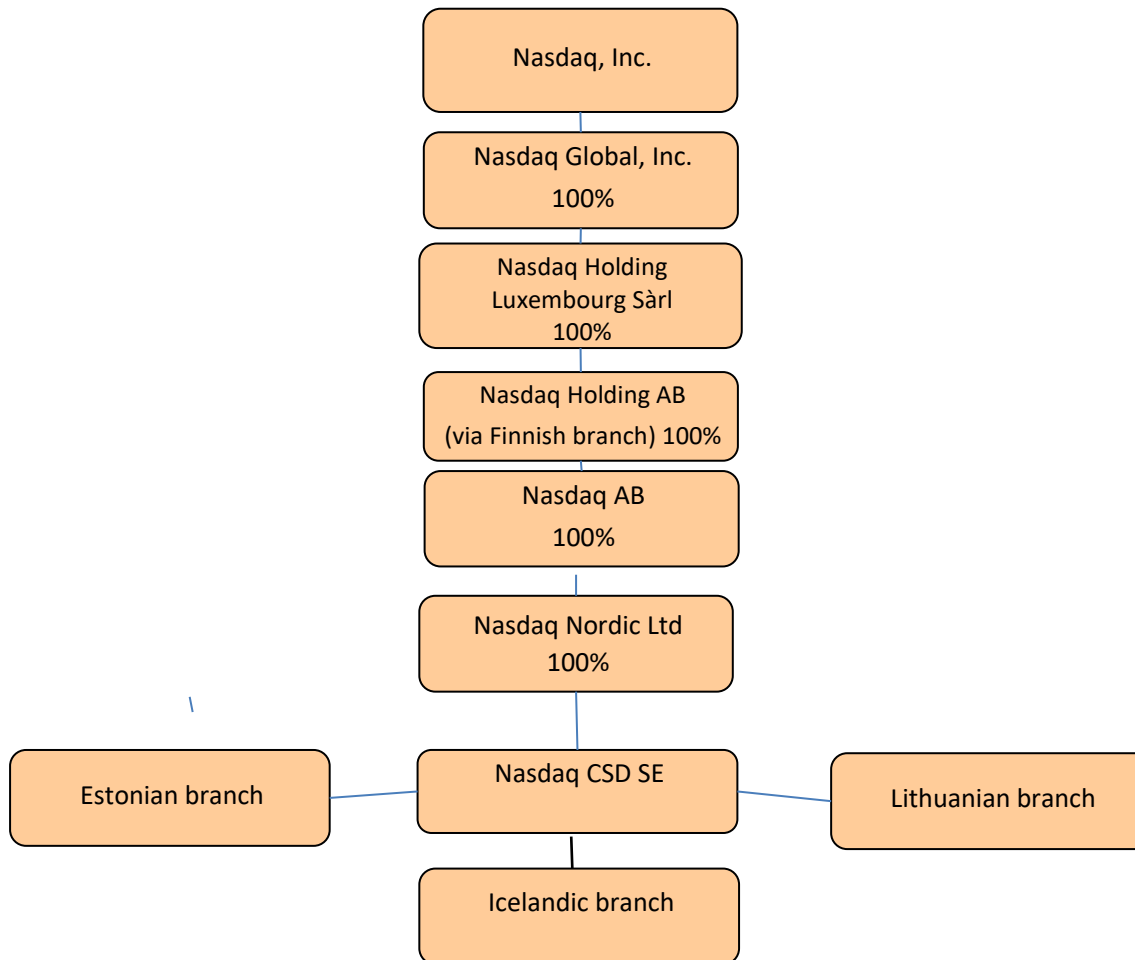


OWNERSHIP AND CONTROL STRUCTURE OF NASDAQ CSD SE

Nasdaq CSD SE (registration No 40003242879) is a part of the Nasdaq Group with Nasdaq Group Inc. (the company incorporated in Delaware, the USA, organisation No. 52-1165937) (Nasdaq Inc.) as the ultimate parent that provides trade and post trade services in more than 50 countries worldwide. The ownership chain of the Depository is the following:



Corporate name	Legal Status	Nasdaq group ownership	Company registration number	Registered address	Domicile	Filed of business	Subject to the financial supervision
Nasdaq Inc	Limited Liability Company	100%	52-1165937	One Liberty Plaza, Floors 49 – 51 Floors, New York, NY 10006	USA	Holding company	yes
Nasdqa Global Inc	Limited Liability Company	100%	52-2115391	One Liberty Plaza, Floors 49 – 51 Floors, New York, NY 10006	USA	Holding company	no
Nasdaq Holding Luxemburg Sàrl	Limited Liability Company	100%	B136112	KAUFHOLD & REVEILLAUD, Avocats 20, avenue MarieThérèse L-2132 LUXEMBOURG	Luxembourg	Holding company	no
Nasdaq Holding AB	Limited Liability Company	100%	556734-1622	Tullvaktsvägen 15, SE 10578 Stockholm	Sweden	Holding company	no
Nasdaq Holding AB, Finnish branch	Limited Liability Company	100%	2177245-6	Fabianinkatu 14, 00130 Helsinki	Finland	Holding company	no
Nasdaq AB	Limited Liability Company	100%	556243-8001	Tullvaktsvägen 15, SE 10578 Stockholm	Finland	Holding company	no
Nasdaq Nordic Ltd	Limited Liability Company	100%	1110552-9	Fabianinkatu 14, 00130 Helsinki	Finland	Holding company	yes

The ownership structure of Nasdaq Inc please find:

<https://www.nasdaq.com/symbol/ndaq/ownership-summary>

The Chairman of Management Board

Indars Aščuks